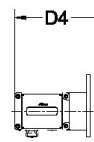


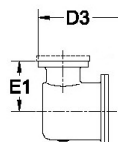


ROMET

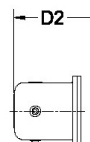
Rotary Gas Meters



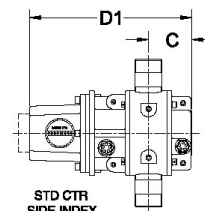
AdEM



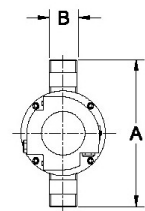
STDID / DCID



STD CTR
END INDEX



STD CTR
SIDE INDEX



METER SIZE	A	B	C	D1	D1 (no Mag. Hsg)	D2	D3	D4	E1	WEIGHT (lbs)
RM1000	10.50"	1.5" NPT	3.08"	10.55"	8.09"	12.03"	12.86"	13.75"	4.00"	12-15

RM1000 - IMPERIAL

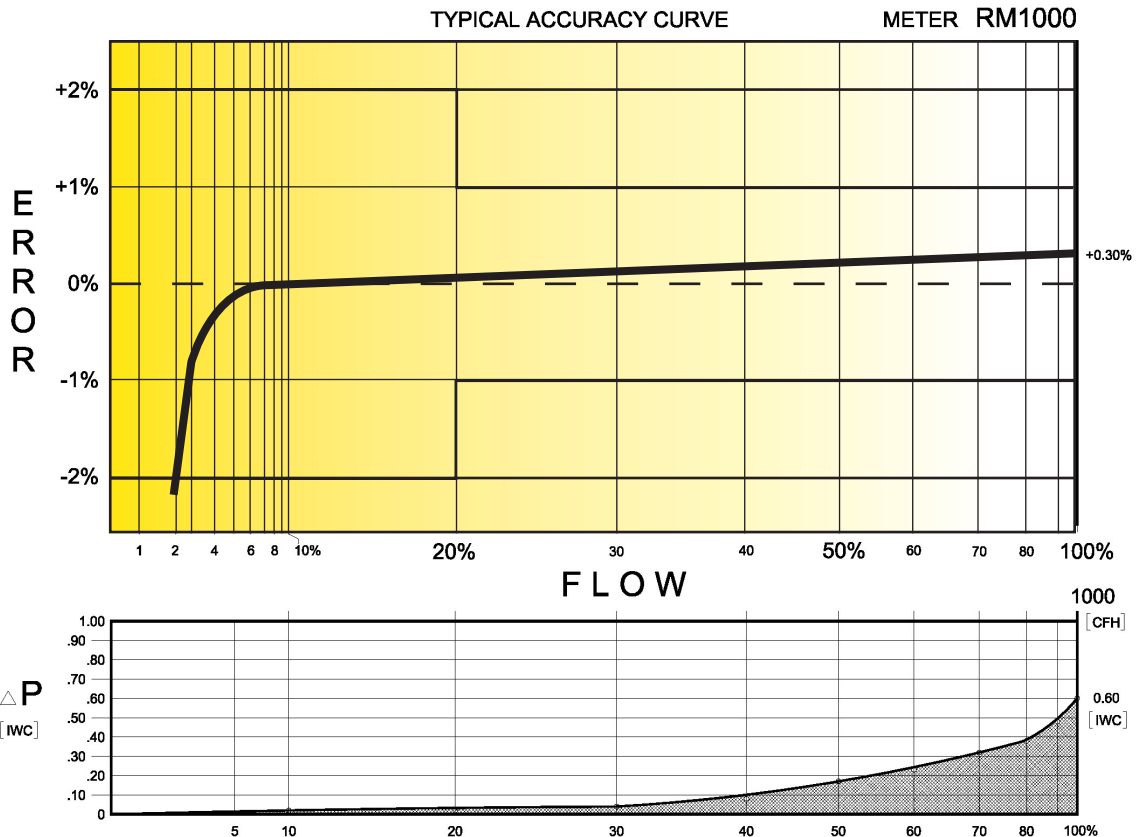
IMPERIAL RM1000 1.5" NPT CONNECTION

TECHNICAL SPECIFICATION

Connection (Threaded)	NPT	1.5"
MAOP	(psig)	175/200
Flow Capacity	(cfh)	1000
Rangeability @ ± 1% Error		25:1
Rangeability @ ± 2% Error		50:1
Start Rate	(cfh)	1.8
Stop Rate	(cfh)	1.5
Differential @ 100% Flow	(I.W.C.)	0.60
Instrument Drive Rate	(cf/rev)	10
LF Pulser (Optional on Std Ctr)	(cf/pulse)	10

CORRECTED FLOW CAPACITY AND TYPICAL ACCURACY GUIDE

RM1000 METER (SCFH)	
Gauge Pressure P.S.I.G. 0.25	RM1000 Qmax = 1000ft ³ /hr
2	1045
5	1317
10	1656
15	1996
20	2335
25	2675
50	4372
75	6069
100	7766
125	9464
150	11161
175	12858



ROMET

GAS METERS AND ELECTRONIC INSTRUMENTS
 Phone 905-624-1591 USA 1-800-387-3201
 www.rometlimited.com • email: romet@rometlimited.com

The values quoted are typical of normal production. They do not constitute a specification. Romet Limited reserves the right to change any information in this literature without notice. All of the information and data in this literature has been carefully compiled and thoroughly checked. However, Romet Limited will not assume responsibility for any possible omissions or errors.
 ROMET and ROMET & DESIGN are registered trademarks of Romet Limited. Romet Limited's gas metering technology is protected under U.S. Patent No. 4,910,519 and 6,453,721 and Canadian Patent No. 1,293,568.