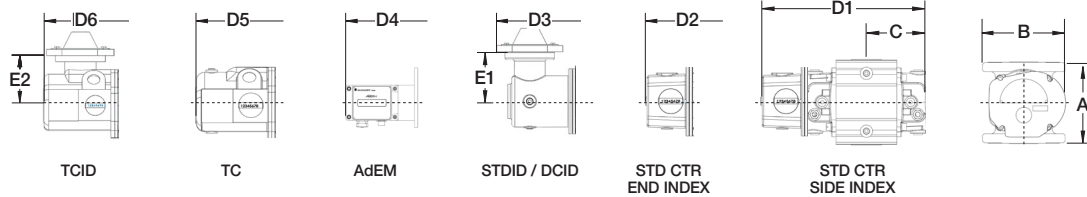
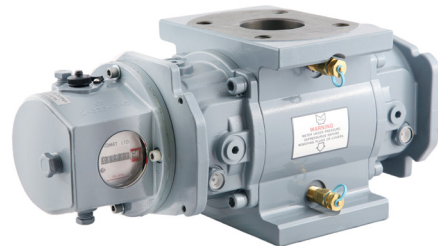
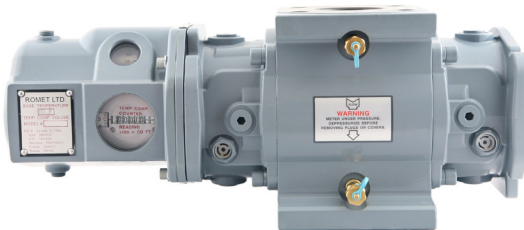
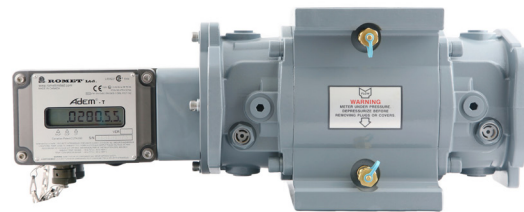




ROMET

Rotary Gas Meters

RMT2000 - IMPERIAL



Note: AMI/AMR adaptors available upon request.

METER SIZE	ANSI 125 FF FLANGE	A	B	C	D1	D2	D3	D4	D5	D6	E1	E2	WEIGHT (lbs)
RMT2000	2"	6.75"	6.88"	5.33"	14.12"	15.60"	17.06"	17.26"	16.66"	16.66"	4.00"	4.00"	20-30

IMPERIAL RMT2000 2" FLANGE CONNECTION

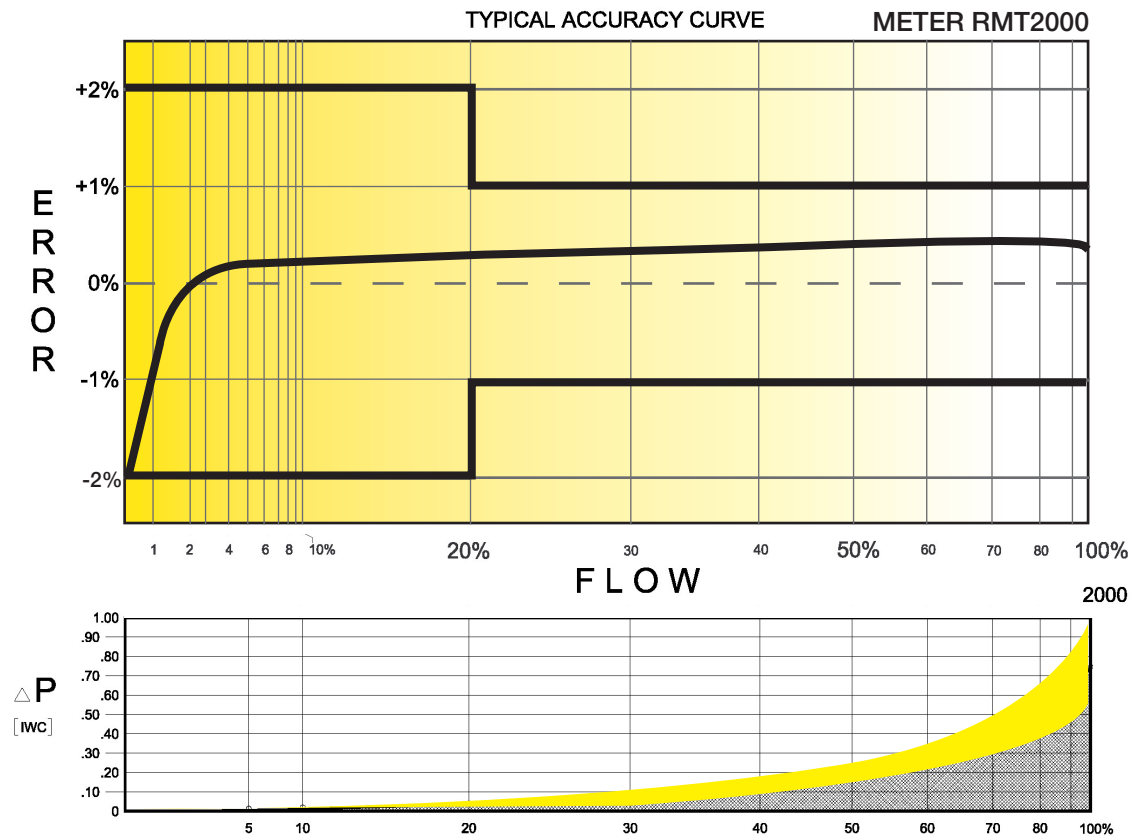
TECHNICAL SPECIFICATION

Connection (Flanged)	ANSI 125 FF	2"
MAOP	(psig)	175
Flow Capacity	(cfh)	2000
Rangeability* @ $\pm 2\%$ / $\pm 1\%$ Error		1:145 / 1:100
Average Start Rate	(cfh)	0.42
Average Stop Rate	(cfh)	0.34
Differential @ 100 % Flow [AIR/N.G.]	(I.W.C.)	0.79 / 0.47
Instrument Drive Rate	(cf/rev)	10 or 100
LF Pulser (Optional)	(cf/rev)	10 or 100

*Note: It should be noted, that moving parts in the meters with greater rangeability ratio are made to high class accuracy and tight tolerances. Improper installation, stresses on piping system due to temperature changes, settling and gas conditions can create a risk of meter rejection.

CORRECTED FLOW CAPACITY AND TYPICAL ACCURACY GUIDE

RMT2000 METER (SCFH)	
Gauge Pressure P.S.I.G. 0.25	RMT2000 Qmax = 2000ft ³ /hr
2	2091
5	2634
10	3313
15	3992
20	4671
25	5350
50	8744
75	12138
100	15533
125	18927
150	22322
175	25716



ROMET

Measuring energy globally

Canada 905-624-1591 USA 1-800-387-3201
www.rometlimited.com • romet@rometlimited.com

The values quoted are typical of normal production. They do not constitute a specification. Romet Limited reserves the right to change any information in this literature without notice. All of the information and data in this literature has

been carefully compiled and thoroughly checked. However, Romet Limited will not assume responsibility for any possible omissions or errors. Romet is a registered trademark.