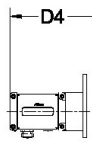


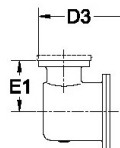


ROMET

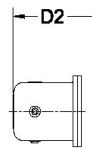
Rotary Gas Meters



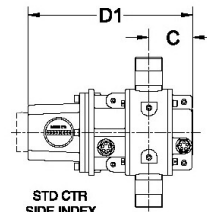
AdEM



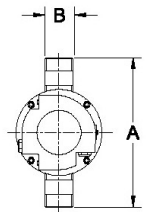
STDID / DCID



STD CTR
END INDEX



STD CTR
SIDE INDEX



METER SIZE	A	B	C	D1	D1 (no Mag. Hsg)	D2	D3	D4	E1	WEIGHT (lbs)
RM600	10.50"	1.5" NPT	3.08"	10.55"	8.09"	12.03"	12.86"	13.75"	4.00"	12-15

RM600 - IMPERIAL

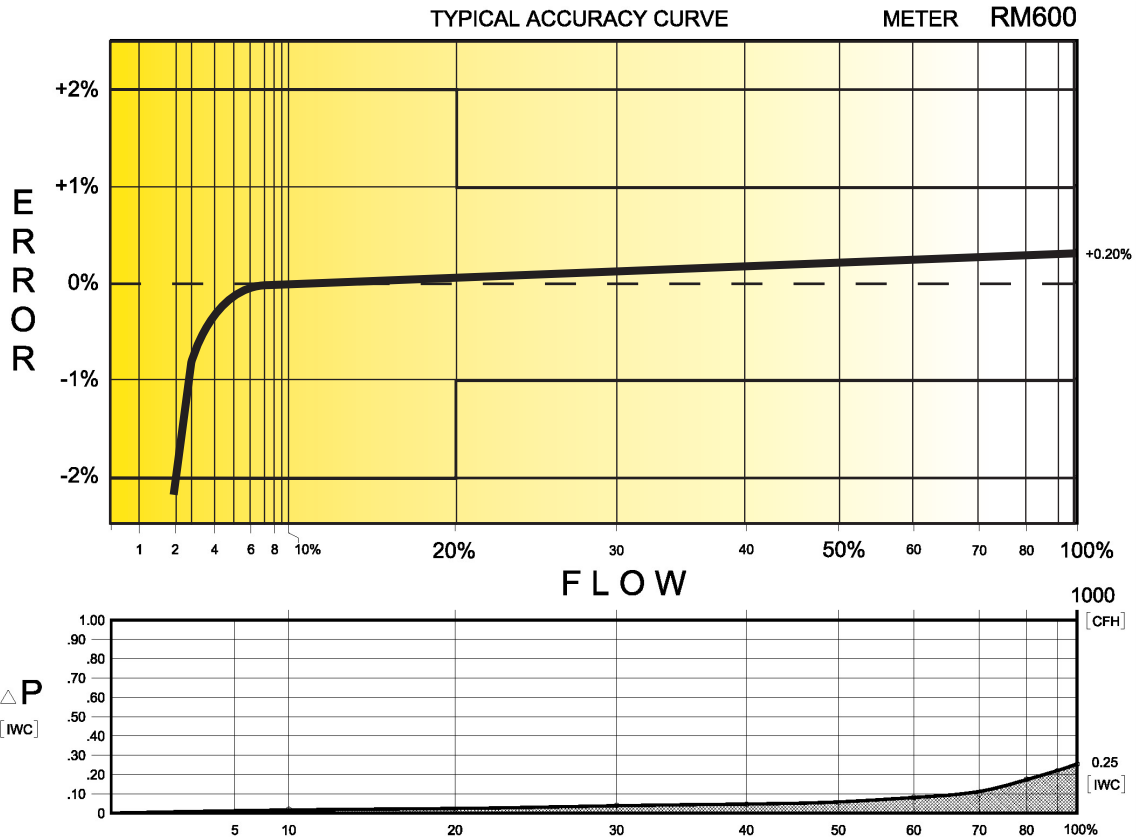
IMPERIAL RM600 1.5" NPT CONNECTION

TECHNICAL SPECIFICATION

Connection (Threaded)	NPT	1.5"
MAOP	(psig)	175/200
Flow Capacity	(cfh)	600
Rangeability @ $\pm 1\%$ Error		25:1
Rangeability @ $\pm 2\%$ Error		50:1
Start Rate	(cfh)	1.8
Stop Rate	(cfh)	1.5
Differential @ 100% Flow	(I.W.C.)	0.25
Instrument Drive Rate	(cf/rev)	10
LF Pulser (Optional on Std Ctr)	(cf/pulse)	10

CORRECTED FLOW CAPACITY AND TYPICAL ACCURACY GUIDE

RM600 METER (SCFH)	
Gauge Pressure P.S.I.G. 0.25	RM600 Qmax = 600ft ³ /hr
2	627
5	790
10	994
15	1197
20	1401
25	1605
50	2623
75	3641
100	4660
125	5678
150	6697
175	7715



ROMET

GAS METERS AND ELECTRONIC INSTRUMENTS

Phone 905-624-1591 USA 1-800-387-3201

www.rometlimited.com • email: romet@rometlimited.com

The values quoted are typical of normal production. They do not constitute a specification. Romet Limited reserves the right to change any information in this literature without notice. All of the information and data in this literature has been carefully compiled and thoroughly checked. However, Romet Limited will not assume responsibility for any possible omissions or errors.

ROMET and ROMET & DESIGN are registered trademarks of Romet Limited. Romet Limited's gas metering technology is protected under U.S. Patent No. 4,910,519 and 6,453,721 and Canadian Patent No. 1,293,568.