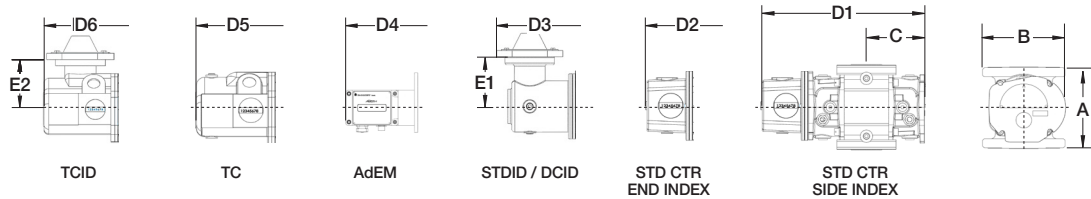
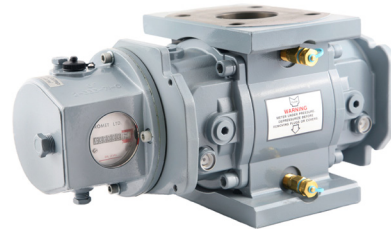
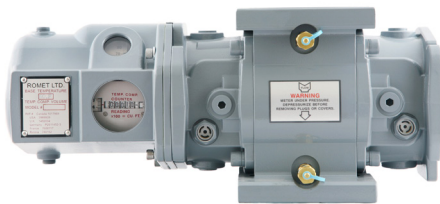
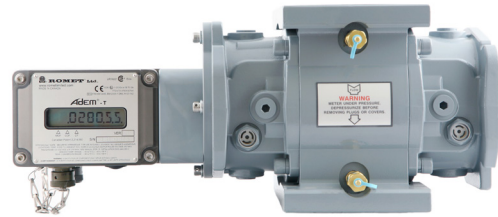
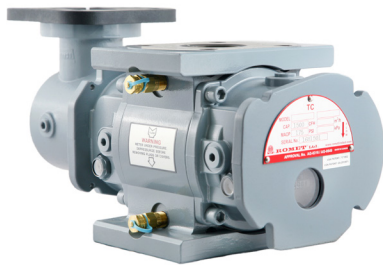




ROMET

Rotary Gas Meters

RMT1500 - IMPERIAL



Note: AMI/AMR adaptors available upon request.

METER SIZE	ANSI 125 FF FLANGE	A	B	C	D1	D2	D3	D4	D5	D6	E1	E2	WEIGHT (lbs)
RMT1500	2"	6.75"	6.88"	4.62"	12.80"	14.28"	15.74"	15.94"	15.34"	15.34"	4.00"	4.00"	18-28

IMPERIAL RMT1500 2" FLANGE CONNECTION

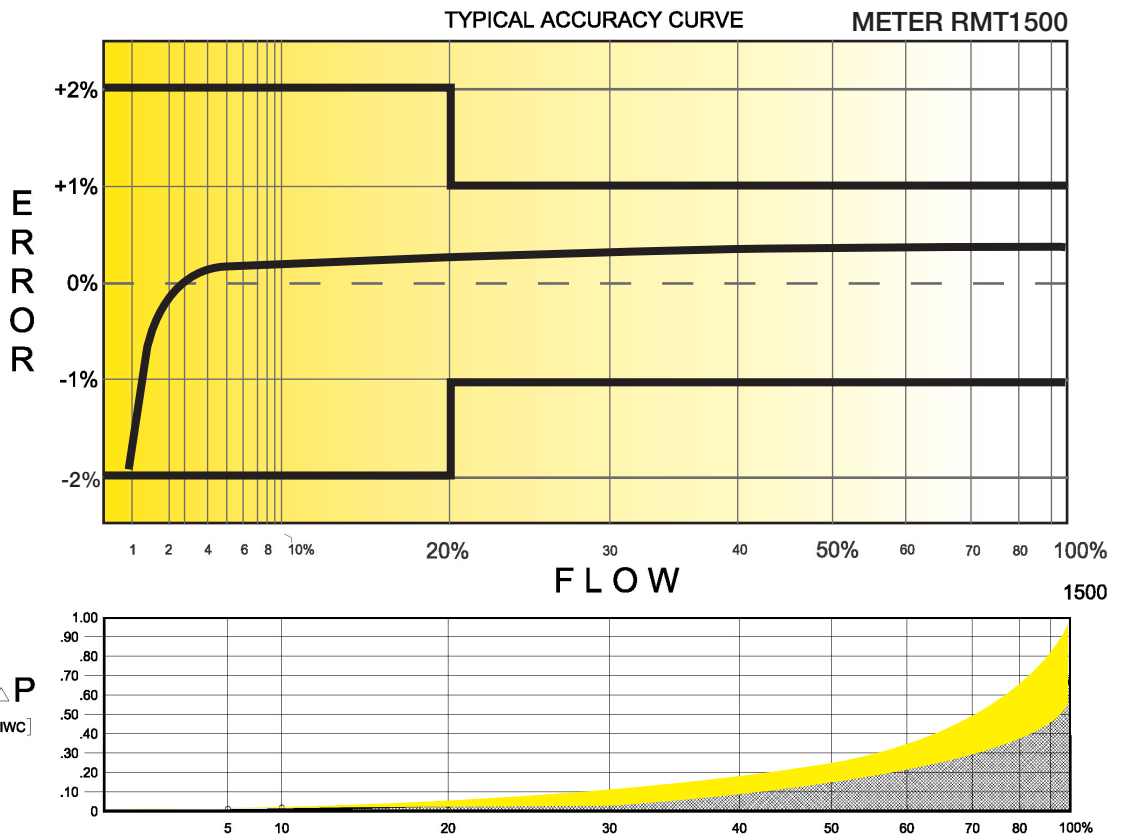
TECHNICAL SPECIFICATION

Connection (Flanged)	ANSI 125 FF	2"
MAOP	(psig)	175
Flow Capacity	(cfh)	1500
Rangeability* @ $\pm 2\%$ / $\pm 1\%$ Error		1:100 / 1:80
Average Start Rate	(cfh)	0.52
Average Stop Rate	(cfh)	0.41
Differential @ 100 % Flow [AIR/N.G.]	(I.W.C.)	0.98 / 0.59
Instrument Drive Rate	(cf/rev)	10
LF Pulser (Optional)	(cf/rev)	10

*Note: It should be noted, that moving parts in the meters with greater rangeability ratio are made to high class accuracy and tight tolerances. Improper installation, stresses on piping system due to temperature changes, settling and gas conditions can create a risk of meter rejection.

CORRECTED FLOW CAPACITY AND TYPICAL ACCURACY GUIDE

RMT1500 METER (SCFH)	
Gauge Pressure P.S.I.G. 0.25	RMT1500 Qmax = 1500ft ³ /hr
2	1568
5	1976
10	2485
15	2994
20	3503
25	4012
50	6558
75	9104
100	11650
125	14196
150	16741
175	19287



ROMET

Measuring energy globally

Canada 905-624-1591 USA 1-800-387-3201
www.rometlimited.com • romet@rometlimited.com

The values quoted are typical of normal production. They do not constitute a specification. Romet Limited reserves the right to change any information in this literature without notice. All of the information and data in this literature has

been carefully compiled and thoroughly checked. However, Romet Limited will not assume responsibility for any possible omissions or errors. Romet is a registered trademark.